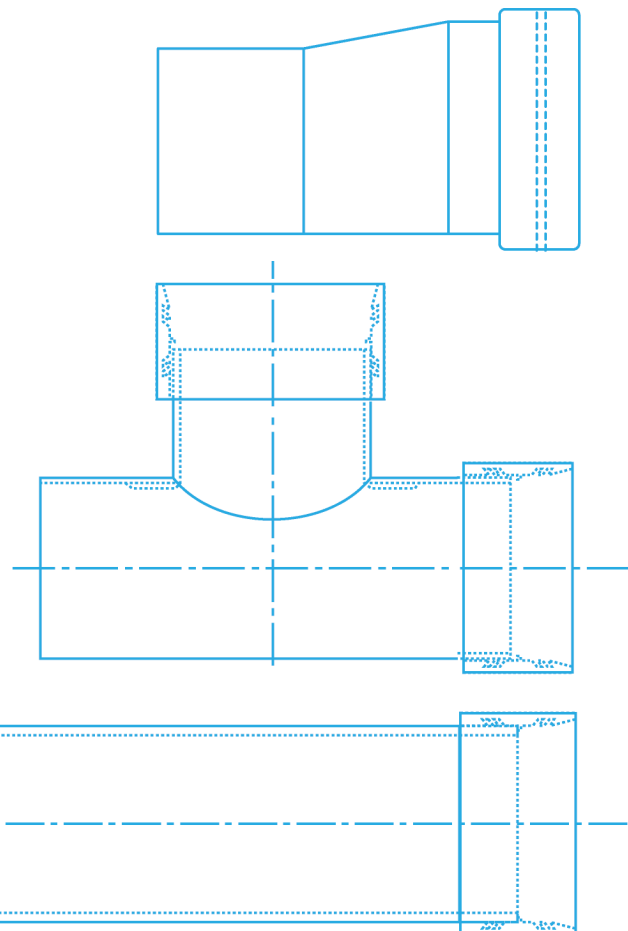
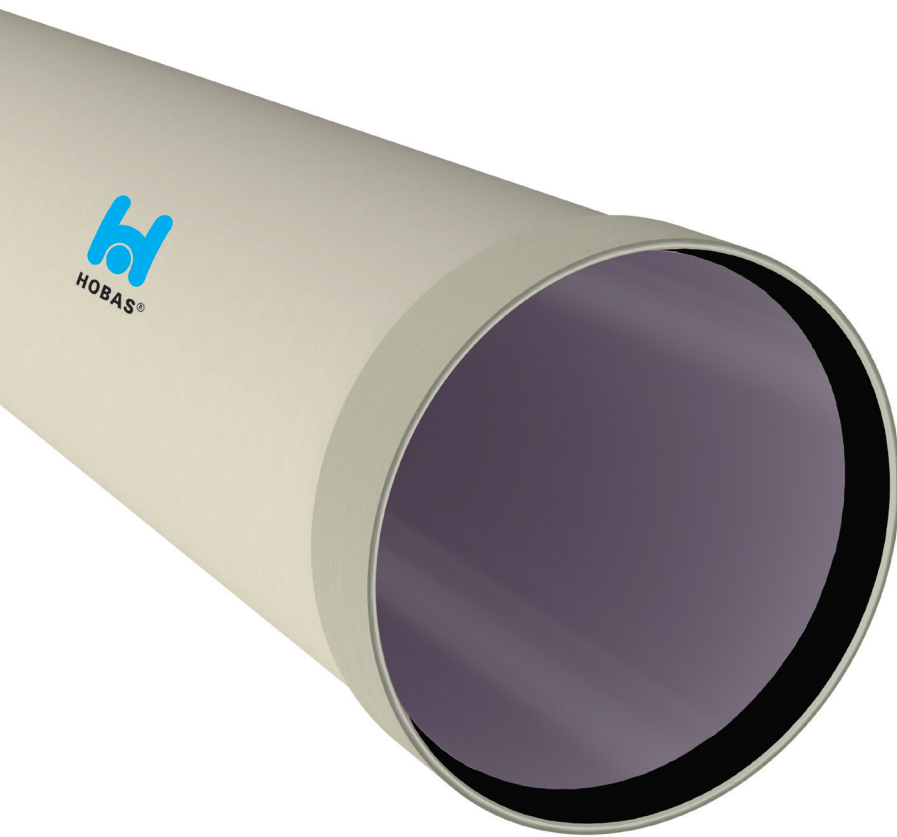




Hobas GRP pipe systems PN 1

Technical product data



Contents

	Page	
	4	Abbreviations
PIPES	5	Pipe PN 1
	7	Jacking Pipe
PIPE JOINTS	14	Hobas filament wound coupling
	15	Joints and Couplings
FITTINGS	17	Segmented Elbow
	19	T-Piece Concentric
	28	T-Piece Eccentric
	37	Reducer
	39	y-Piece 45°
	48	y-Piece 60°
	57	Notes



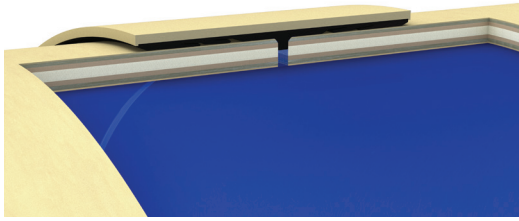
This version replaces all previous versions. For all current data and values please visit www.amiblu.com.

Abbreviations

α	Angle
B1	DE to product standard (EN 1796/EN 14364)
B2	DE to GRP and casting standards
B3	DE to GRP and PVC standards
B4	DE to GRP and steel standards
BE	Branch eccentricity
BL	Branch length / Bend length
BLL	Branch laying length
BP	Branch position
d_e	External diameter
d_{eB}	External diameter branch
d_{eH}	External diameter header
d_{eL}	External diameter large
d_{eS}	External diameter small

DN	Nominal Diameter
DN_B	Nominal diameter branch
DN_H	Nominal diameter header
DN_L	Nominal diameter large
DN_S	Nominal diameter small
DS	Diameter series
e	Wall thickness
HLL	Header laying length
LL	Laying length
LN	Nominal length
m	Weight
PN	Nominal Pressure
R	Radius
SN	Nominal Stiffness

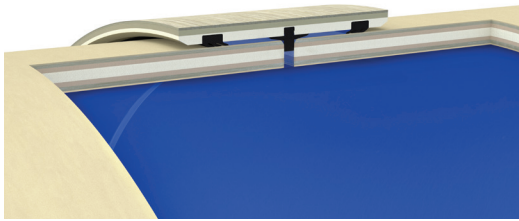
Joints and Couplings



Hobas Filament Wound Coupling (FWC)

Diameter range (DN): 200 - 2555 mm

Angular deflection*: up to 3°

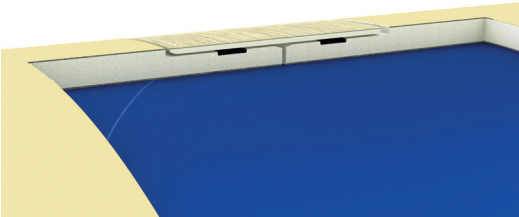


Amiblu Non-pressure Coupling (ASC)

Diameter range (DN): 300 - 3600 mm

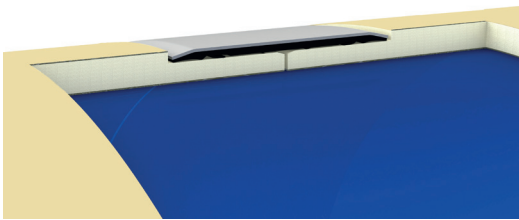
Angular deflection*: up to 3°

* The degree of angular deflection depends on the pipe diameter. Please contact Amiblu for further information.



GRP Sleeve (GR)

Diameter range (de): 272 - 3600 mm



Stainless Steel Sleeve With Integrated Rubber Seal (SE)

Diameter range (de): 272 - 2550 mm

Field joints for pressure & gravity applications

Laminated field joints are available in uniaxial and biaxial designs. Amiblu provides the necessary instructions or skilled personnel for butt-wrap joining in pressure and non-pressure applications. Technologies developed by Amiblu provide faster and more cost-efficient installations.

Masonry couplings

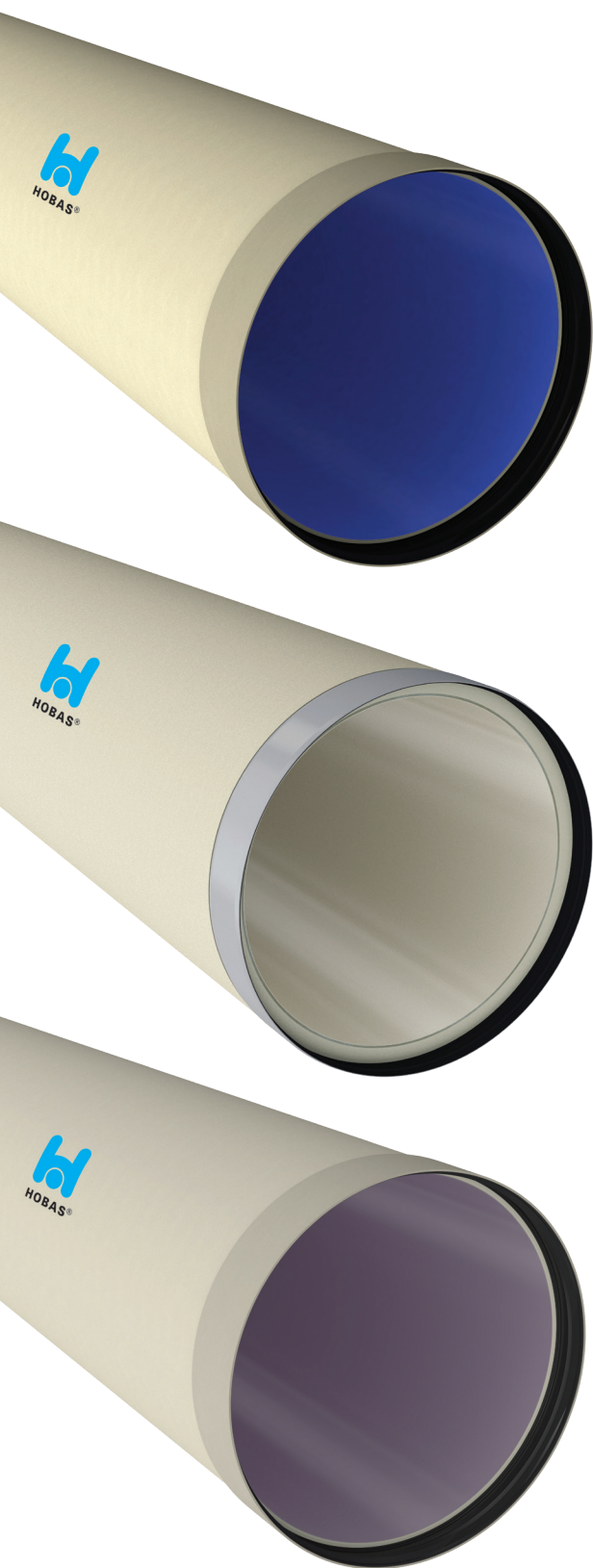
The masonry coupling is used for connecting pipes to concrete shafts and walls. Masonry couplings are sanded for improved stability in concrete shafts. Masonry couplings can be delivered with pipe ring, and optionally with sealing tape. Lengths can be selected as required in consideration of the pipe joint data.

Mechanical couplings

Amiblu pipes can be joined using mechanical steel couplings such as tangential bolt couplings or axial bolt couplings.

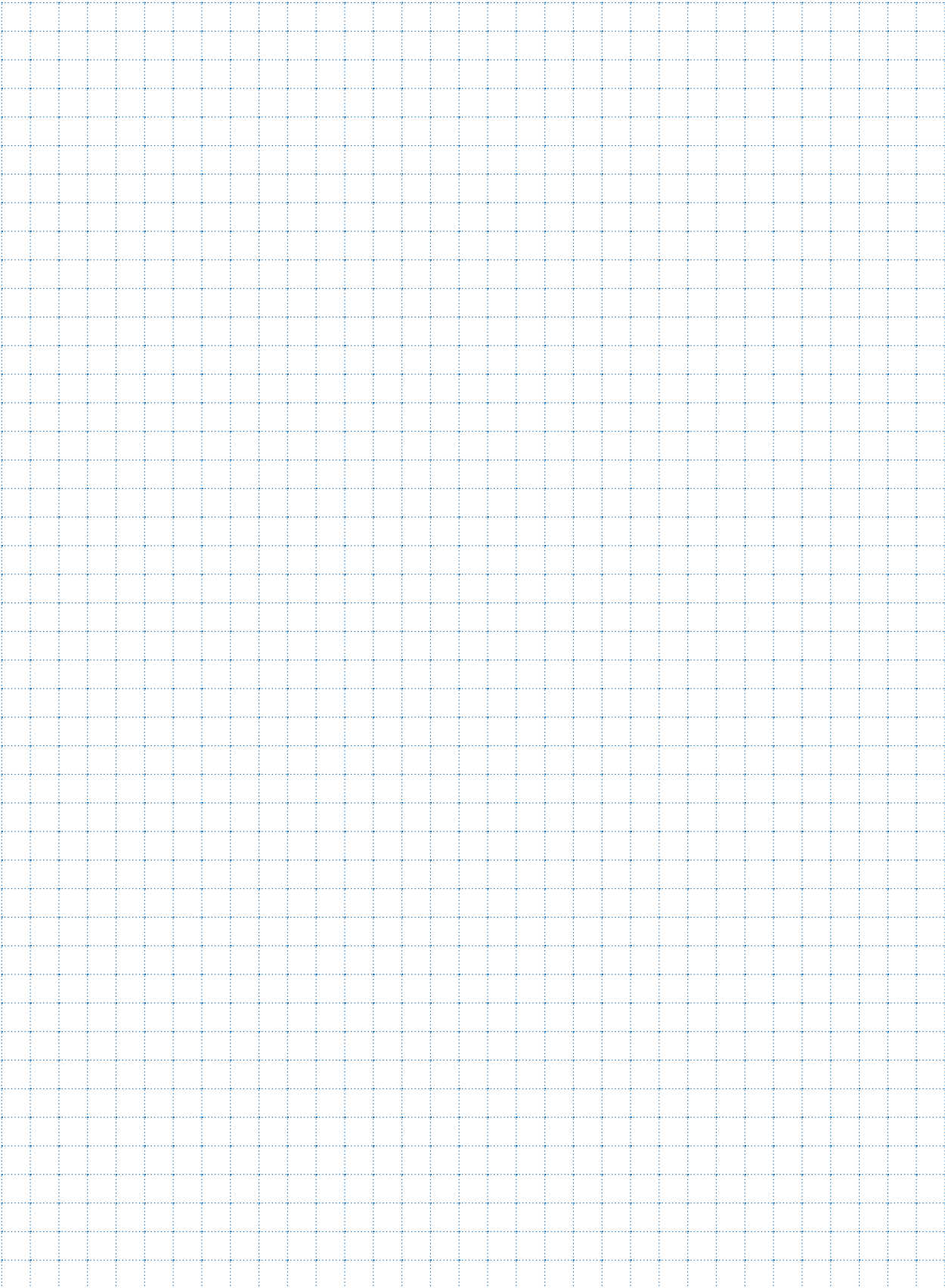
Amiblu flanges

Amiblu manufactures and sells flanges in various designs and according to different standards and requirements. When connecting two GRP flanges, the standard bolt pattern to which flanges are manufactured is EN 1092. Other bolting dimension systems such as according to AWWA, ANSI, DIN, and JIS can be supplied.



Amiblu offers a broad portfolio of centrifugally cast Hobas GRP pipe systems for various applications and installation methods, e.g. jacking pipes, relining pipes, special pipes with highly durable inner liner, and many more. For the complete range of offered products, please visit www.amiblu.com.

Notes



Why there is nothing else like an Amiblu pipe system



Engineered for the next 150 years



Service-focused partners to solve your problems



Innovation to challenge the status quo



Amiblu®

Explore more on [amiblu.com](https://www.amiblu.com) or contact your local partner for sustainable GRP pipe solutions.

All rights reserved. No part of this document may be reproduced in any form or by any means without prior written permission. All data, especially technical data, is subject to subsequent modifications. The data given is not binding and must therefore be checked in each individual case and revised as appropriate.
© Amiblu Holding GmbH, Publication: 06/2020 | Rev. 1.3



Amiblu Pipe Systems
Engineered for the next 150 years